

# A PLAT OF MARTIN DOWNS

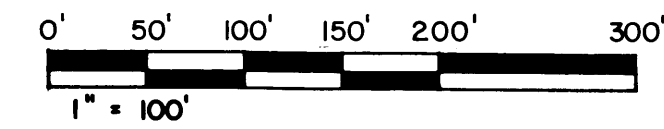
PLAT NO. 2  
BEING A PART OF MARTIN DOWNS, A P.U.D.  
LYING IN SECTIONS 13 AND 14, TWP. 38 S., RNG. 40 E.  
MARTIN COUNTY, FLORIDA

I, LOUISE V. ISAACS,  
CLERK OF THE CIRCUIT  
COURT OF MARTIN COUNTY,  
FLORIDA, HEREBY CERTIFY  
THAT THIS PLAT WAS FILED  
FOR RECORD IN PLAT  
BOOK 9, PAGE 37,  
MARTIN COUNTY, FLORIDA,  
PUBLIC RECORDS, THIS  
DAY OF \_\_\_\_\_,  
A.D. 1983.

LOUISE V. ISAACS, CLERK  
CIRCUIT COURT  
MARTIN COUNTY, FLORIDA

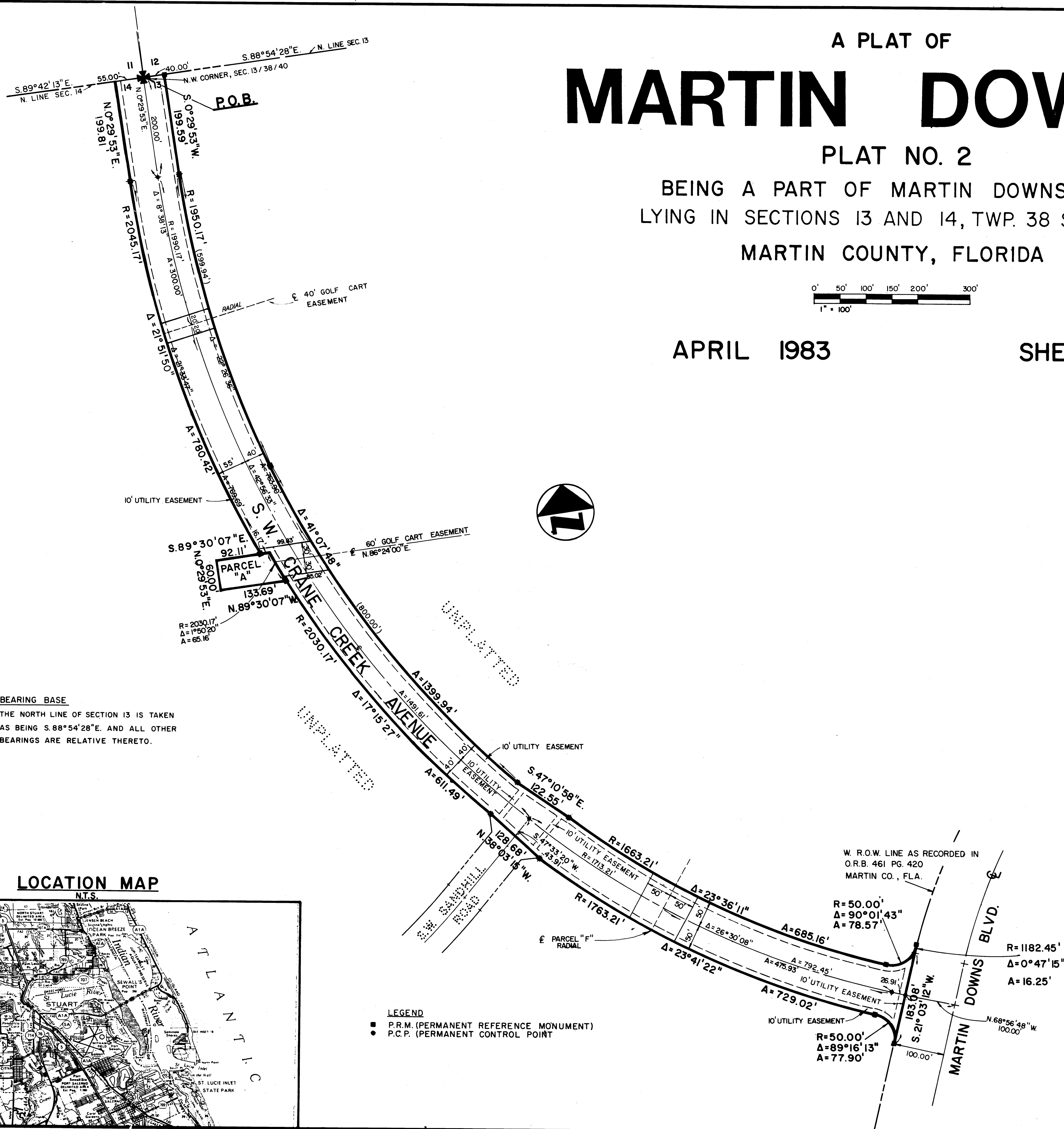
BY \_\_\_\_\_  
DEPUTY CLERK

FILE NO. \_\_\_\_\_



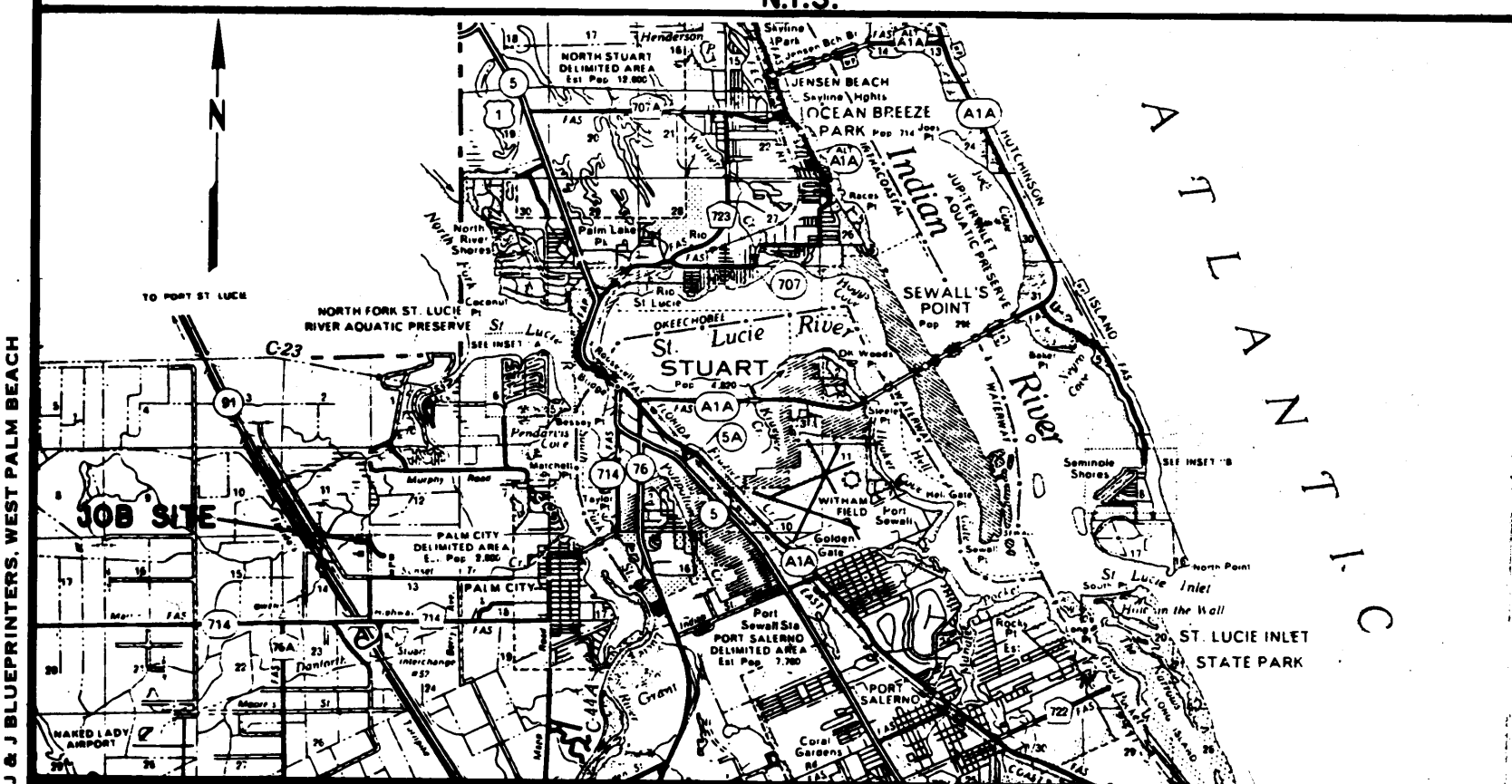
APRIL 1983

SHEET 2 OF 2



**BEARING BASE**  
THE NORTH LINE OF SECTION 13 IS TAKEN  
AS BEING S.88°54'28"E. AND ALL OTHER  
BEARINGS ARE RELATIVE THERETO.

**LOCATION MAP**  
N.T.S.



- LEGEND**
- P.R.M. (PERMANENT REFERENCE MONUMENT)
  - P.C.P. (PERMANENT CONTROL POINT)

LINDAHL, BROWNING, FERRARI & HELLSTROM, INC. Consulting Engineers, Planners & Surveyors		2	2
JUPITER, FLORIDA	STUART, FLORIDA		
FORT PIERCE, FLORIDA			